

PIXASOLAR- Fully coloured solar panel

Description

The solar cells

Perc

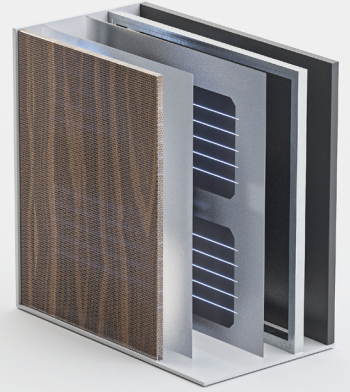
Today, we are resolutely opting for high-end PERC solar cells for aesthetic and practical reasons. Their surface improves the colour contrast and the uniformity of the ceramic inkjet print. Our PERC solar cells will retain their power perfectly over time.

Mono-crystalline

We always work with mono-crystalline cells with high performance and a lower speed of light-induced degradation (LID). The low cell temperature coefficient ensures higher performance at high temperatures. Multicrystalline cells perform less in the long term and may microcrack after a few years due to cyclic stress and thermal expansion.

Bypass diodes

We strive to cover every surface as efficiently as possible. Using a smart circuit design with bypass diodes in our configuration can limit the shadow effect. The synergy between our experienced team of technicians and designers ensures that we can maximize each project's yield, taking into account the environmental factors.



Important Features

Type	Mono c-Si solar cell		
Power	100 - 160Wp/m ² (depending on color or print)		
Working temperature	-40°C to +85°C		
Connection	IP67 / IP68 on rear		
Cables / plugs	4mm ² / Original MC4		
Guarantee	10-year product workmanship warranty 30-year linear power performance guarantee up to 80%		
Temp. Coefficient	VOC	Isc	Power
	-0.30%/K	+0.039%/K	-0.41%/K

Applications

- ▷ Facade
- ▷ Wall
- ▷ Signage

PIXASOLAR- Fully coloured solar panel with measurements

Measurements in mm, other measurements on appeal available

Length:	Variable between 600 mm - 2400 mm (in multiples of 300 mm)	Colouring / texture:	Ceramic inkjet print on the inside of front glass
Width:	Variable between 600 mm - 1200 mm (in multiples of 300 mm)	Encapsulation:	PVB film
Weight:	28kg/m ² (5 + 5 mm)	Edge finishing:	Thermal seal
Glass front:	3 mm - 8 mm tempered glass	Structure:	Borderless (without frame)
Glass back:	3 mm - 8 mm tempered glass		

Glass Composition

